

Views & News

Detailed scrutiny of data: Anti Evasion Cell picks five top sectors

The 'Anti-Evasion Cell' of the Federal Board of Revenue (FBR) has picked five top sectors-cement, sugar, beverages, cigarettes and lubricants-for detailed scrutiny of data to check any kind of evasion of duties and taxes.

Rescheduling NBP loan for TIP: finance links GoP guarantee to ECC nod

The Finance Ministry is reported to have refused to give GoP guarantee in favour of National Bank of Pakistan (NBP) for rescheduling of the loan of Telephone Industries of Pakistan (TIP) until Economic Co-ordination Committee (ECC) of the Cabinet gives green signal, sources told *Business Recorder*.

Industrialists resent Rs two million/acre PDC raise by PQA: land transfer fee, NUF revised

The Port Qasim Authority (PQA) has enhanced the rate of Peripheral Development Charges (PDC) by 100 percent, or Rs 2 million per acre, for all categories of allotment lands in its industrial estate, except the area for edible oil and molasses.

Phutti price likely to be fixed at Rs 1,500/40 kg

The government is likely to fix seed-cotton (phutti) intervention price at Rs 1500 per 40 kg for the base grade 3, with staple length 1-1/32 during 2009-10, an increase of Rs 35 (less than one rupee per 40 kg of Rs 1465 last year), sources told *Business Recorder* here on Sunday.

World Bank asks FBR to remove IMS/PRAL functions overlapping

The World Bank (WB) has urged the Federal Board of Revenue (FBR) to remove overlapping of functions between FBR Information Management Wing (IMS) and Pakistan Revenue Automation Limited (PRAL) to clearly define functions for procurement of IT-related equipment and software development on federal taxes.

Steel dealers go on strike against FIA investigation

Pakistan Steel Mills Corporation's dealers have gone on strike and have decided not to do business with the corporation unless FIA investigations stopped completely.

Blast kills 16 police recruits in Mingora

A suicide bomber killed at least 16 police recruits Sunday in Mingora in the deadliest attack since the army regained control over the north-western valley from the Taliban, officials said. The blast in the yard of the police station in Mingora, Swat's main town, came one day after the army said it had destroyed a major training camp for suicide bombers.

Pakistan rejects US accusation on missile modification

The Foreign Office on Sunday categorically rejected the accusation in an article, by Eric Schmitt and David Sanger, titled 'US says Pakistan made changes to missiles sold for defence'. The Foreign Office spokesman, Abdul Basit, said that the article was published in The New York Times on August 29, and added that no modification has been made to the missiles under reference.

Japan opposition crushes LDP in historic election

Japanese voters swept to power an untested centre-left party on Sunday in an electoral avalanche that ended more than half a century of almost unbroken conservative rule, according to exit polls.

Saudi tightens security to protect oil plants

Saudi Arabia has tightened security at oil facilities after the country's anti-terror chief escaped a suicide attack, guards at Abqaiq, the world's biggest oil processing plant, said on Sunday. Abqaiq was the first Saudi oil target since Al Qaeda launched attacks aimed at toppling Saudi Arabia's pro-Western monarchy in 2003.

* Please see disclaimer note on page 2 and 3 of this newsletter.

Research Department

Muhammad Atif Nazir
 Equity Research Analyst
 0300 8020406 muhamad@accamail.com

Karachi Office
 Room No. 504, 5th Floor, Business & Finance Centre I I Chundrigar Road
 Tel 021 2467201-19 Fax 021 2467200

Lahore Office
 203-B, 2nd Floor, City Tower, Gulberg II
 Tel 042 5770451-9 Fax 042 5770460

Statistical Data

Equities

	KSE 100	Turnover (mn)
28.08.09	8,541	201.699
27.08.09	8,315	116.879
Change	226	84.82

Board Meetings

Date	Time	Company
31.08.09	11:00	Cherat Cement Company
31.08.09	11:30	Crescent Star Insurance
31.08.09	12:00	Pakistan Int. Container
31.08.09	3:00	Sana Industries
01.09.09	9:30	Otsuka Pakistan
01.09.09	11:00	Cherat Papersack
03.09.09	12:00	Kot Addu Power Company
08.09.09	12:30	Shabbir Tiles
08.09.09	10:00	Dynea Pakistan

IPO's

Prospectus Published	Date of Opening & Closing	Company
-	-	-
-	-	-

GDR

28.08.09	OGDC (1GDR=10 shares)	\$11.00
28.08.09	UBL (1GDR=4 shares)	\$3.00 +0.80 +36.36%
28.08.09	MCB (1GDR=2 shares)	\$3.00

Commodities

	Price	Change
Oil (USD/bbl)	72.74	0.25
Gold (USD/oz)	958.80	11.50

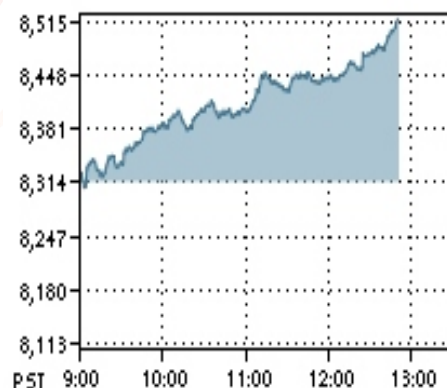
SCRA

	Balance (US\$mn)	Net Flow (US\$mn)
21.08.09	42.21	(1.14)

CFS MKII

	Total Value (Prsmn)	Average Rate (%)
15.06.09	68.48	50.00
12.06.09	68.50	50.00

KSE 100 Index





THE RUPEE: marginal losses on currency market

As a result of strong demand for dollars by importers, the rupee was down against dollar on the currency market during the week ended on August 29, 2009. On the interbank market, the rupee lost 5 paisa versus dollar for buying and selling at 83.10 and 83.15. In the open market also the rupee lost 15 paisa in relation to the US currency for buying and selling at 83.00 and 83.10.

MONEY WEEK: budgetary borrowings from SBP plummet to Rs 26 billion

Budgetary borrowings from the central bank--State Bank of Pakistan--registered a quantum drop during the week ended on August 15, 2009. By the end of the previous week, the government had borrowed Rs103 billion to bridge its expenditure/revenue gap from the State Bank, which dropped to a mere Rs 26 billion.

Gilani condemns attack on security forces

Prime Minister Syed Yousuf Raza Gilani has strongly condemned the attack on security forces in Mingora in which several personnel embraced Shahadat. In a statement, the Prime Minister termed the attack a cowardly act. He directed the authorities for immediate relief to the injured.

Blast sets Nato fuel trucks afire at Chaman

An explosion ripped through a line of trucks ferrying fuel to Nato troops in Afghanistan, setting several oil tankers ablaze on Sunday at Chaman border crossing, police said. The blast appeared to be the second terrorist attack on Sunday in Pakistan and the second in a week to target a border crossing.

Cheney says cooperation with CIA probe 'will depend'

Former Vice President Dick Cheney said he might refuse to speak with a prosecutor investigating suspected CIA prisoner abuses, a probe he branded as political and bad for national security.

Australia confirms arms found on ship bound from North Korea to Iran

Weapons including rocket-propelled grenades were found on an Australian-owned ship seized by the United Arab Emirates while travelling from North Korea to Iran, Australia's transport minister confirmed Sunday.

Britain 'made u-turn on Lockerbie bomber for oil': report

The British government decided two years ago it was "in the overwhelming interests of the United Kingdom" to make the Lockerbie bomber eligible for return to Libya, The Sunday Times newspaper reported.

Iran restricts Hajj pilgrims over swine flu

Iran has decided to place restrictions on pilgrims for the Muslim annual hajj pilgrimage expected to begin on November 19 in a bid to limit the spread of swine flu, the Mehr news agency reported. "People over the age of 65 and children under 12 will be prohibited from going to the hajj," the agency quoted the head of the Iranian hajj organisation Mostafa Khaksar Qahroudi as saying.

Lawmakers suggest Kennedy widow as his successor

Lawmakers on Sunday suggested that the senate seat held by late US Senator Ted Kennedy could be filled by his widow, Vicki, despite her professed reluctance to take the job.

Announcements					
Company	EPS (Rs)	Dividend/ Bonus/ Right	Spot From	Book Closure	
				From	To
JS Global Capital	4.12	100% (F)(D)	-	17/10/09	23/10/09
Unilever Pakistan Ltd.	92.27	184% (i)(D)	-	29/09/09	05/10/09
Atlas Battery Limited	25.41	100% (F)(D)20% (B)	-	21/09/09	29/09/09
Adamjee Insurance Co.	5.18	15% (i)(D)	-	29/09/09	05/10/09
Nishat Mills Limited	6.81	20% (F)(D)	-	23/10/09	29/10/09
Pakistan Tobacco Co.	7.96	27.5% (ii)(D)	14/09/09	19/09/09	25/09/09
Shifa International	2.53	12% (F)(D)	-	24/10/09	02/11/09
Pakistan Petroleum Ltd.	33.38	30% (F)(D) 20% (B)	11/09/09	21/09/09	29/09/09
National Refinery Limited	19.17	125% (F)(D)	-	10/10/09	19/10/09
Attock Cement Pakistan	20.69	32.5% (F)(D) 20% (B)	-	09/10/09	19/10/09
Shell Pakistan Limited	14.80	80% (i)(D)	09/09/09	16/09/09	30/09/09
Pak Oman Advantage Fund	-	9.605% (F)(D)	-	26/09/09	02/10/09
Unilever Pakistan Foods	20.21	200% (i)(D)	-	10/09/09	16/09/09
Ferozsons Laboratories	10.53	10% (F)(D) 20% (B)	14/09/09	19/09/09	28/09/09
IGI Insurance Limited	11.05	10% (i)(D)	03/09/09	10/09/09	18/09/09
OGDC	12.91	25% (F)(D)	14/09/09	19/09/09	19/09/09
BOC Pakistan Limited	6.65	25% (i)(D)	01/09/09	08/09/09	14/09/09
Hub Power Company	3.27	20% (F)(D)	07/09/09	14/09/09	30/09/09
Pervez Ahmed Securities	-	231.08% AT 50% DISCOUNT	02/09/09	09/09/09	15/09/09
AL-Ghazi Tractors	20.46	100% (i)(D)	25/08/09	01/09/09	08/09/09

Top Symbols						
SYMBOL	OPEN RATE	HIGH RATE	LOW RATE	CURRENT RATE	CHANGE	VOLUME
TOP SYMBOLS BY VOLUME						
Pak.PTA Ltd.	3.56	4.56	3.55	4.48	0.92	56,688,810
Oil and Gas Dev	99.58	104.28	99.7	103.71	4.13	12,242,458
National Bank of Pak	65.65	68.55	64.3	67.77	2.12	10,236,463
Arif Habib Sec. Pak	31.69	33.27	31.61	33.27	1.58	8,734,689
Petroleum Ltd.	204.45	214.67	205	214.67	10.22	8,456,930
TOP SYMBOLS BY PRICE INCREASE						
Nestle PakistanSPO	1000.99	1051.03	1000	1049.9	48.91	1,108
Dreamworld	540	567	567	567	27.00	1
Bata (Pak) Ltd.	800	830	765	825.15	25.15	105
Wyeth Pak Ltd.	1147.8	1180	1090.41	1167	19.20	178
Unilever FoodsXD	1403	1419	1419	1419	16.00	4
TOP SYMBOLS BY PRICE DECREASE						
Rafhan Maize XD	1575	1530	1530	1530	-45.00	6
Unilever Pak. Ltd.	2275.25	2300	2230	2253.41	-21.84	103
Siemens Pak Engg.	1080	1060	1050	1060	-20.00	300
Treet Corporation	433.99	415	415	415	-18.99	25
Berger Paints	78.99	79	75.05	75.38	-3.61	4,271

This report is prepared for an information purpose only. The material used in this report has been taken from sources those are considered reliable but we do not guarantee that it is accurate and complete. S.N.M Securities (Pvt.) Limited and its employees bear no liability for any direct or indirect consequential loss arising from use of this report. This report or any part of it may not be reproduced or republished without prior permission.



Daily Supports/Resistances

	Close	S2	S1	Pivot	R1	R2
KSE100	8541.22	8220.07	8380.64	8467.22	8627.79	8714.37
AHL	68.31	61.90	65.10	66.71	69.91	71.52
AHSL	33.27	31.06	32.16	32.72	33.82	34.38
AICL	100.51	97.64	99.07	100.24	101.67	102.84
ANL	26.45	26.05	26.25	26.50	26.70	26.95
ATRL	152.83	149.01	150.92	152.41	154.32	155.81
BAFL	11.62	11.31	11.47	11.63	11.79	11.95
BIPL	6.30	6.05	6.17	6.29	6.41	6.53
BOP	10.06	9.83	9.95	10.09	10.21	10.35
BOSI	7.40	7.27	7.34	7.41	7.48	7.55
DGKC	35.32	33.45	34.38	35.04	35.97	36.63
ENGRO	145.26	136.82	141.04	143.52	147.74	150.22
HBL	114.60	110.07	112.33	113.77	116.03	117.47
ICI	152.29	139.90	146.10	149.19	155.39	158.48
JOVC	13.90	12.86	13.38	14.12	14.64	15.38
JSCL	25.70	25.25	25.47	25.83	26.05	26.41
LUCK	73.75	71.25	72.50	73.50	74.75	75.75
MCB	197.24	183.57	190.41	193.82	200.66	204.07
MLCF	4.96	4.72	4.84	4.92	5.04	5.12
NBP	67.77	62.62	65.20	66.87	69.45	71.12
NETSOL	23.24	21.93	22.59	22.98	23.64	24.03
NML	46.73	45.26	46.00	46.67	47.41	48.08
OGDC	103.71	97.98	100.85	102.56	105.43	107.14
POL	205.56	193.65	199.61	203.20	209.16	212.75
PPL	214.67	201.78	208.22	211.45	217.89	221.12
PSO	286.60	275.19	280.90	284.45	290.16	293.71
PTC	21.74	20.61	21.17	21.61	22.17	22.61
SNGP	28.56	28.01	28.29	28.51	28.79	29.01
SPL	18.68	18.37	18.53	18.66	18.82	18.95
UBL	47.27	44.69	45.98	46.79	48.08	48.89

Weekly Supports/Resistances

	Weekend's Close	S2	S1	Pivot	R1	R2
KSE100	8541.22	7989.81	8265.52	8409.86	8685.57	8829.91
AHL	68.31	49.11	58.71	73.10	82.70	97.09
AHSL	33.27	30.24	31.76	32.51	34.03	34.78
AICL	100.51	91.49	96.00	100.00	104.51	108.51
ANL	26.45	24.86	25.66	26.70	27.50	28.54
ATRL	152.83	135.75	144.29	150.54	159.08	165.33
BAFL	11.62	10.84	11.23	11.69	12.08	12.54
BIPL	6.30	5.72	6.01	6.45	6.74	7.18
BOP	10.06	9.57	9.81	10.21	10.45	10.85
BOSI	7.40	7.20	7.30	7.40	7.50	7.60
DGKC	35.32	32.77	34.05	35.02	36.30	37.27
ENGRO	145.26	132.42	138.84	142.42	148.84	152.42
HBL	114.60	106.73	110.67	112.93	116.87	119.13
ICI	152.29	136.04	144.16	148.23	156.35	160.42
JOVC	13.90	10.46	12.18	13.52	15.24	16.58
JSCL	25.70	22.97	24.33	25.47	26.83	27.97
LUCK	73.75	69.98	71.87	73.93	75.82	77.88
MCB	197.24	166.92	182.08	189.66	204.82	212.40
MLCF	4.96	4.61	4.78	4.97	5.14	5.33
NBP	67.77	62.57	65.17	66.86	69.46	71.15
NETSOL	23.24	20.55	21.89	22.85	24.19	25.15
NML	46.73	42.78	44.75	46.38	48.35	49.98
OGDC	103.71	92.45	98.08	101.18	106.81	109.91
POL	205.56	163.56	184.56	195.68	216.68	227.80
PPL	214.67	185.12	199.90	207.28	222.06	229.44
PSO	286.60	262.88	274.74	282.87	294.73	302.86
PTC	21.74	19.33	20.54	21.51	22.72	23.69
SNGP	28.56	27.79	28.18	28.58	28.97	29.37
SPL	18.68	18.04	18.36	18.83	19.15	19.62
UBL	47.27	41.84	44.55	46.08	48.79	50.32

Last Day's Moving Averages

	Last Day's			Moving Averages		
	OPEN	HIGH	LOW	SMA 10	SMA 20	SMA 40
KSE100	8315.16	8553.79	8306.64	8167.16	8031.56	7835.63
AHL	82.83	68.31	63.50	80.51	81.07	80.49
AHSL	31.69	33.27	31.61	31.43	31.12	30.07
AICL	99.49	101.40	98.80	97.34	100.27	98.22
ANL	26.61	26.75	26.30	26.20	26.17	26.24
ATRL	151.73	153.90	150.50	147.10	150.94	148.72
BAFL	11.37	11.80	11.48	11.39	11.21	11.42
BIPL	6.32	6.40	6.16	6.34	6.34	6.54
BOP	10.02	10.24	9.98	10.15	10.11	10.62
BOSI	7.32	7.49	7.35	7.39	7.43	7.42
DGKC	34.52	35.69	34.10	34.90	36.62	35.46
ENGRO	139.43	146.00	139.30	137.37	137.02	138.05
HBL	112.01	115.20	111.50	110.35	106.71	101.91
ICI	145.04	152.29	143.00	142.46	143.68	143.27
JOVC	13.86	14.86	13.60	12.69	13.05	13.95
JSCL	25.91	26.18	25.60	24.62	24.78	25.23
LUCK	72.35	74.50	72.25	73.06	74.40	71.27
MCB	187.85	197.24	186.99	179.92	174.57	169.89
MLCF	4.80	5.00	4.80	4.85	5.20	5.18
NBP	65.65	68.55	64.30	65.58	65.87	68.77
NETSOL	22.57	23.38	22.33	22.67	24.32	23.85
NML	46.25	47.35	45.94	44.45	43.28	42.15
OGDC	99.58	104.28	99.70	96.43	93.70	90.06
POL	197.24	206.80	197.25	182.67	177.46	168.44
PPL	204.45	214.67	205.00	198.35	194.16	192.86
PSO	279.93	288.01	278.75	272.14	262.04	248.28
PTC	21.40	22.04	21.04	20.09	18.81	18.02
SNGP	28.24	28.74	28.24	28.45	28.65	29.90
SPL	18.64	18.80	18.51	18.90	19.08	19.35
UBL	45.78	47.60	45.50	44.86	43.91	43.32

This report is prepared for an information purpose only. The material used in this report has been taken from sources those are considered reliable but we do not guarantee that it is accurate and complete. S.N.M Securities (Pvt.) Limited and its employees bear no liability for any direct or indirect consequential loss arising from use of this report. This report or any part of it may not be reproduced or republished without prior permission.