

Views & News

Oil price hedging plan in doldrums

The government's oil price hedging plan is reportedly in doldrums as most of the international commercial banks, with the exception of Deutsche Bank and BNP Paribas, have shown no interest in becoming consultants as offered by Finance Ministry, sources in Finance Ministry told *Business Recorder*.

Government in consonance with principle of growth: Prime Minister

Prime Minister Syed Yusuf Raza Gilani on Sunday said that his government was in consonance with the principle of growth and the only prescription to survive in the existing tough competition was to become more competitive, quality conscious and innovative.

TIP's claims fraudulent, violating its own charter: PPR

Pakistan Power Resources (PPR) has strongly objected to the claims made by Transparency International Pakistan's (TIP) Syed Adil Gilani in an interview with *Business Recorder* and which were reproduced in the story, 'Claim that RPPs charges only slightly higher a myth: TIP' published on September 13. PPR has also accused TIP of violating its own charter.

TIP clarification

TIP has issued following clarification: Transparency International Pakistan has only quoted from the press reports. In order to obtain authenticated documents from public bodies, TIP has been writing to PPIB, NEPRA and WAPDA to provide the Evaluation reports and Contract Agreement to TI Pakistan.

Steps against non-compliant taxpayers: finance assures FBR of full backing

The Ministry of Finance has assured the Federal Board of Revenue (FBR) of full backing of the government for initiating enforcement measures against the non-compliant taxpayers to meet the revenue collection target of Rs 1380 billion.

'List of White Taxpayers' renamed

The Federal Board of Revenue (FBR) has renamed "List of White Taxpayers" as "Active Taxpayers List" with simplified parameters to include maximum taxpayers within the list of complaint taxpayers, regularly filing returns.

Four trade officers abroad: Prime Minister formally approves appointment

Prime Minister Yousaf Raza Gilani has formally approved the appointment of four trade officers abroad whom he had reportedly recommended in defiance of his own rhetorical exhortation to ministries and departments to make appointments on merit, sources told *Business Recorder* here on Sunday.

Expansion of US presence part of long term engagement: foreign minister

Foreign Minister Shah Mehmood Qureshi has said the expansion of US presence was part of its long-term engagement with Pakistan. In an exclusive interview with private TV channel, Qureshi said that when the issue came up, he advised the authorities of the US embassy in Islamabad to tell the people of Pakistan and the Pakistani media. Everything about the US embassy should be transparent, he said.

Nawaz meets Saudi King

Pakistan Muslim League-N Chief Nawaz Sharif had a meeting with Saudi King Shah Abdullah Bin Abdul Aziz and discussed in detail matters relating to the region including Pakistan. The meeting held in King's guesthouse Qasr al Safa and lasted for one hour. Chief of Saudi intelligence Shahzada Mukran Bin Abdul Aziz, PML-N leader Ishaq Dar and Hussain Nawaz, son of Nawaz Sharif were also present in the meeting.

THE RUPEE: mixed trend

The rupee managed to hold on to its current levels against the dollar during the week ended on September 12, 2009. On the interbank market, the rupee moved down slightly against dollar and lost one paisa for buying and selling at 82.85 and 82.90.

* Please see disclaimer note on page 2 and 3 of this newsletter.

Research Department

Muhammad Atif Nazir

Equity Research Analyst

0300 8020406 muhamad@accamail.com

Karachi Office

Room No. 504, 5th Floor, Business & Finance Centre I I Chundrigar Road
Tel 021 2467201-19 Fax 021 2467200

Lahore Office

203-B, 2nd Floor, City Tower, Gulberg II
Tel 042 5770451-9 Fax 042 5770460

Statistical Data

Equities

| | KSE 100 | Turnover (mn) |
|---------------|---------|---------------|
| 11.09.09 | 9,059 | 192.758 |
| 10.09.09 | 8,996 | 257.569 |
| Change | 63 | (64.811) |

Board Meetings

| Date | Time | Company |
|----------|-------|---------------------------|
| 14.09.09 | 12:00 | Latif Jute |
| 14.09.09 | 2:00 | Agriauto Industries |
| 15.09.09 | 11:00 | Dawood Capital Management |
| 15.09.09 | 11:00 | Dawood Islamic Fund |
| 15.09.09 | 11:00 | Dawood M. Market Fund |
| 15.09.09 | 11:00 | First Dawood M. Fund |
| 15.09.09 | 12:00 | Century Paper & Board |
| 15.09.09 | 11:30 | Kohinoor Energy |
| 16.09.09 | 10:30 | Fauji Cement |
| 16.09.09 | 10:30 | Dawood Lawrencepur |

IPO's

| Prospectus Published | Date of Opening & Closing | Company |
|----------------------|---------------------------|---------|
| - | - | - |
| - | - | - |

GDR

| | | |
|----------|------------------------|---------|
| 11.09.09 | OGDC (1GDR =10 shares) | \$12.00 |
| 11.09.09 | UBL (1GDR=4 shares) | \$3.00 |
| 11.09.09 | MCB (1GDR=2 shares) | \$3.00 |

Commodities

| | Price | Change |
|---------------|---------|--------|
| Oil (USD/bbl) | 69.29 | (2.65) |
| Gold (USD/oz) | 1006.40 | 9.60 |

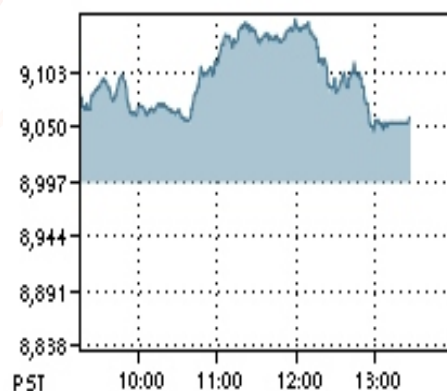
SCRA

| | Balance (US\$m) | Net Flow (US\$m) |
|----------|-----------------|------------------|
| 09.09.09 | 175.74 | 8.13 |

CFS MKII

| | Total Value (Prsmn) | Average Rate (%) |
|----------|---------------------|------------------|
| 15.06.09 | 68.48 | 50.00 |
| 12.06.09 | 68.50 | 50.00 |

KSE 100 Index





Russian and Turkmen leaders fail to reach new gas deal

Russian and Turkmen leaders failed on Sunday to set a timeframe for the return of Turkmen gas flows to Russia, halted since April after a pipeline blast which left the central Asian nation short of revenues. The meeting between Russia's president, Dmitry Medvedev, and Turkmen leader Kurbanguly Berdymukhamedov had been expected to generate a breakthrough, mending ties.

MONEY WEEK: changes in foreign assets, other items dictate monetary indicators

The week ended on 29th August, 2009, was dominated by changes in banking system's net foreign assets (NFA) and other items-net (OINs), dictating the path of changes in such indicators as broad money and net domestic assets (or loosely domestic credit expansion).

Three troops killed in Khyber bomb blast

A bomb blast killed three paramilitary troops Sunday in Khyber region, where security forces are pressing ahead with an offensive to secure a major supply route for foreign forces in Afghanistan. Also in the north-west, a suicide bomber attempted to attack a security post in the Swat Valley but was killed before he could strike.

Clearing OTC derivatives not enough to cut risks: BIS

Central clearing of privately traded derivatives contracts won't be enough to make the \$600 trillion sector safe, while clearing of some bespoke trades may not be desirable, the Bank of International Settlements said.

Pro-Ahmadinejad cleric killed in west Iran

A Sunni cleric who backed President Mahmoud Ahmadinejad in Iran's disputed June election has been killed in a Kurdish-populated region, a semi-official news agency reported on Sunday. Fars News Agency said Borhan Aali, a Friday prayers leader in the city of Sanandaj in western Kurdistan province, was killed by unknown assailants late on Saturday at his home.

Israeli Prime Minister meets Mubarak in Cairo

Israeli Prime Minister Benjamin Netanyahu met Egyptian President Hosny Mubarak in Cairo Sunday evening for talks, amid speculation that the two men were to discuss a deal to free Israeli soldier Gilad Shalit.

Open interest at futures counter up by 19 percent

The open interest at the futures counter increased by 19 percent (Rs 63.7 million) to Rs 398 million during the week ended on September 12, 2009. The future spreads witnessed a significant fall of 0.34 percent to close at a negative 2.59 percent.

Share market depicts mix trend

The Karachi share market witnessed mixed trend during the week ended on September 12, 2009 mainly due to local investors' cautious stance ahead of Eid. The KSE-100 index moved both ways and closed at 9,058.77 points with a meagre gain of 56.09 points.

CCP raids PSMA offices; record seized

The Competition Commission of Pakistan (CCP) raided the Pakistan Sugar Mills Association (psma) offices at Islamabad and Lahore and recovered substantial material, including PSMA internal correspondence, minutes of meetings, and computerised data on the industry to have firsthand knowledge of sugar price escalation modules.

| Announcements | | | | | |
|--------------------------------|----------|------------------------|-----------|--------------|----------|
| Company | EPS (Rs) | Dividend/ Bonus/ Right | Spot From | Book Closure | |
| | | | | From | To |
| ZIL Limited | 10.59 | 40%(F)(D)10%(B) | | 21/10/09 | 27/10/09 |
| Pakistan Int. Container | - | 15%(i)(D) | - | 25/09/09 | 02/10/09 |
| Artistic Denim Mills | 4.48 | 20%(F)(D) | - | 13/10/09 | 27/10/09 |
| Baluchistan Wheels Limited | 2.75 | 15%(F)(D) | - | 17/10/09 | 24/10/09 |
| Ismail Industries Ltd. | 6.26 | 15%(F)(D) | - | 13/10/09 | 20/10/09 |
| Dyneea Pakistan | 2.98 | 15%(F)(D) | - | 20/10/09 | 26/10/09 |
| Sana Industries Limited | 4.26 | 35%(F)(D) | - | 07/10/09 | 10/10/09 |
| Pakistan Int. Container | 10.09 | 20%(B) | - | 25/09/09 | 02/10/09 |
| Otsuka Pakistan Limited | 2.41 | 15%(F)(D) | - | 08/10/09 | 14/10/09 |
| Eye Television Network Limited | 4.82 | 3.5%(F)(D) | - | 23/09/09 | 29/09/09 |
| East West Life Assurance Co. | -2.88 | 10%(R) | - | 25/09/09 | 01/10/09 |
| Pakistan Paper Products | 8.36 | 20%(F)(D) | - | 21/09/09 | 30/09/09 |
| JS Global Capital | 4.12 | 100%(F)(D) | - | 17/10/09 | 23/10/09 |
| Unilever Pakistan Ltd. | 92.27 | 184%(i)(D) | - | 29/09/09 | 05/10/09 |
| Atlas Battery Limited | 25.41 | 100%(F)(D)20%(B) | - | 21/09/09 | 29/09/09 |
| Adamjee Insurance Co. | 5.18 | 15%(i)(D) | - | 29/09/09 | 05/10/09 |
| Nishat Mills Limited | 6.81 | 20%(F)(D) | - | 23/10/09 | 29/10/09 |
| Pakistan Tobacco Co. | 7.96 | 27.5%(ii)(D) | 14/09/09 | 19/09/09 | 25/09/09 |
| Shifa International | 2.53 | 12%(F)(D) | - | 24/10/09 | 02/11/09 |
| Pakistan Petroleum Ltd. | 33.38 | 30%(F)(D) 20%(B) | 11/09/09 | 21/09/09 | 29/09/09 |

| Top Symbols | | | | | | |
|--------------------------------------|-----------|-----------|----------|--------------|--------|------------|
| SYMBOL | OPEN RATE | HIGH RATE | LOW RATE | CURRENT RATE | CHANGE | VOLUME |
| TOP SYMBOLS BY VOLUME | | | | | | |
| Jah.Sidd. Co. | 28.97 | 28.99 | 28.01 | 28.14 | -0.83 | 15,427,572 |
| D.G.K.Cement | 33.9 | 35.5 | 34.01 | 35.35 | 1.45 | 14,846,551 |
| Lucky Cement | 74.08 | 77.49 | 74.31 | 76.68 | 2.60 | 14,807,205 |
| Oil and Gas Dev | 109.53 | 114.4 | 110.1 | 112.09 | 2.56 | 12,864,701 |
| Arif Habib Sec. | 37.33 | 39.1 | 37.61 | 38.31 | 0.98 | 11,979,567 |
| TOP SYMBOLS BY PRICE INCREASE | | | | | | |
| Rafhan Maize Prod. | 1400 | 1470 | 1400 | 1470 | 70.00 | 4 |
| Bata (Pak) Ltd. | 935 | 980 | 945 | 980 | 45.00 | 613 |
| Siemens Pak Engg. | 1163 | 1210 | 1206 | 1206 | 43.00 | 30 |
| Indus Motor | 157.94 | 165.83 | 156 | 165.83 | 7.89 | 186,661 |
| Pak Engineering | 211.38 | 220 | 200.82 | 218.48 | 7.10 | 1,935 |
| TOP SYMBOLS BY PRICE DECREASE | | | | | | |
| Unilever Pak. Ltd. | 2312.39 | 2300 | 2268 | 2290 | -22.39 | 39 |
| National Refin. | 227.22 | 229.5 | 216.01 | 219.2 | -8.02 | 205,739 |
| Wyeth Pak Ltd. | 1215 | 1210 | 1209.5 | 1210 | -5.00 | 10 |
| AL-Abbas Sugur | 78 | 74.1 | 74.1 | 74.1 | -3.90 | 185,000 |
| Habib Bank Ltd | 121.96 | 123.5 | 116.1 | 118.79 | -3.17 | 397,027 |

This report is prepared for an information purpose only. The material used in this report has been taken from sources those are considered reliable but we do not guarantee that it is accurate and complete. S.N.M Securities (Pvt.) Limited and its employees bear no liability for any direct or indirect consequential loss arising from use of this report. This report or any part of it may not be reproduced or republished without prior permission.



| Daily Supports/Resistances | | | | | | |
|----------------------------|---------|---------|---------|---------|---------|---------|
| | Close | S2 | S1 | Pivot | R1 | R2 |
| KSE100 | 9058.77 | 8912.16 | 8985.46 | 9069.50 | 9142.80 | 9226.84 |
| AHL | 67.66 | 65.76 | 66.71 | 67.85 | 68.80 | 69.94 |
| AHSL | 38.31 | 36.85 | 37.58 | 38.34 | 39.07 | 39.83 |
| AICL | 103.52 | 101.64 | 102.58 | 104.04 | 104.98 | 106.44 |
| ANL | 27.23 | 26.54 | 26.89 | 27.39 | 27.74 | 28.24 |
| ATRL | 154.80 | 150.68 | 152.74 | 155.87 | 157.93 | 161.06 |
| BAFL | 12.60 | 12.28 | 12.44 | 12.70 | 12.86 | 13.12 |
| BIPL | 6.06 | 5.77 | 5.92 | 6.09 | 6.24 | 6.41 |
| BOP | 13.16 | 12.74 | 12.95 | 13.31 | 13.52 | 13.88 |
| BOSI | 7.52 | 7.32 | 7.42 | 7.60 | 7.70 | 7.88 |
| DGKC | 35.35 | 33.46 | 34.41 | 34.95 | 35.90 | 36.44 |
| ENGRO | 155.66 | 152.26 | 153.96 | 155.83 | 157.53 | 159.40 |
| HBL | 118.79 | 112.06 | 115.43 | 119.46 | 122.83 | 126.86 |
| ICI | 168.15 | 159.72 | 163.93 | 167.22 | 171.43 | 174.72 |
| JOVC | 13.09 | 12.53 | 12.81 | 13.23 | 13.51 | 13.93 |
| JSCL | 28.14 | 27.40 | 27.77 | 28.38 | 28.75 | 29.36 |
| LUCK | 76.68 | 72.98 | 74.83 | 76.16 | 78.01 | 79.34 |
| MCB | 206.87 | 203.42 | 205.15 | 207.72 | 209.45 | 212.02 |
| MLCF | 4.89 | 4.76 | 4.83 | 4.91 | 4.98 | 5.06 |
| NBP | 78.82 | 76.95 | 77.88 | 78.92 | 79.85 | 80.89 |
| NETSOL | 25.16 | 23.81 | 24.48 | 24.99 | 25.66 | 26.17 |
| NML | 58.38 | 55.21 | 56.79 | 57.59 | 59.17 | 59.97 |
| OGDC | 112.09 | 107.90 | 109.99 | 112.20 | 114.29 | 116.50 |
| POL | 214.16 | 205.47 | 209.81 | 213.36 | 217.70 | 221.25 |
| PPL | 226.72 | 223.97 | 225.35 | 227.37 | 228.75 | 230.77 |
| PSO | 295.66 | 287.89 | 291.77 | 294.89 | 298.77 | 301.89 |
| PTC | 20.96 | 20.22 | 20.59 | 21.17 | 21.54 | 22.12 |
| SNGP | 28.94 | 28.03 | 28.48 | 28.75 | 29.20 | 29.47 |
| SPL | 18.92 | 18.44 | 18.68 | 18.99 | 19.23 | 19.54 |
| UBL | 55.09 | 53.38 | 54.23 | 55.37 | 56.22 | 57.36 |

| Weekly Supports/Resistances | | | | | | |
|-----------------------------|-----------------|---------|---------|---------|---------|---------|
| | Weekend's Close | S2 | S1 | Pivot | R1 | R2 |
| KSE100 | 9058.77 | 8644.20 | 8851.48 | 9001.52 | 9208.80 | 9358.84 |
| AHL | 67.66 | 62.56 | 65.11 | 67.05 | 69.60 | 71.54 |
| AHSL | 38.31 | 33.00 | 35.65 | 37.38 | 40.03 | 41.76 |
| AICL | 103.52 | 94.15 | 98.83 | 102.49 | 107.17 | 110.83 |
| ANL | 27.23 | 25.42 | 26.32 | 27.91 | 28.81 | 30.40 |
| ATRL | 154.80 | 138.60 | 146.70 | 153.10 | 161.20 | 167.60 |
| BAFL | 12.60 | 11.30 | 11.95 | 12.57 | 13.22 | 13.84 |
| BIPL | 6.06 | 5.63 | 5.84 | 6.17 | 6.38 | 6.71 |
| BOP | 13.16 | 11.03 | 12.09 | 13.20 | 14.26 | 15.37 |
| BOSI | 7.52 | 7.05 | 7.29 | 7.53 | 7.77 | 8.01 |
| DGKC | 35.35 | 32.12 | 33.73 | 34.62 | 36.23 | 37.12 |
| ENGRO | 155.66 | 139.11 | 147.39 | 154.14 | 162.42 | 169.17 |
| HBL | 118.79 | 108.50 | 113.65 | 118.67 | 123.82 | 128.84 |
| ICI | 168.15 | 152.38 | 160.27 | 169.88 | 177.77 | 187.38 |
| JOVC | 13.09 | 11.60 | 12.35 | 13.17 | 13.92 | 14.74 |
| JSCL | 28.14 | 24.12 | 26.13 | 27.81 | 29.82 | 31.50 |
| LUCK | 76.68 | 68.57 | 72.62 | 75.06 | 79.11 | 81.55 |
| MCB | 206.87 | 193.02 | 199.95 | 208.92 | 215.85 | 224.82 |
| MLCF | 4.89 | 4.61 | 4.75 | 4.90 | 5.04 | 5.19 |
| NBP | 78.82 | 72.37 | 75.60 | 78.02 | 81.25 | 83.67 |
| NETSOL | 25.16 | 22.95 | 24.06 | 25.35 | 26.46 | 27.75 |
| NML | 58.38 | 45.47 | 51.93 | 55.15 | 61.61 | 64.83 |
| OGDC | 112.09 | 103.28 | 107.68 | 112.97 | 117.37 | 122.66 |
| POL | 214.16 | 183.13 | 198.65 | 207.77 | 223.29 | 232.41 |
| PPL | 226.72 | 203.79 | 215.25 | 223.47 | 234.93 | 243.15 |
| PSO | 295.66 | 274.96 | 285.31 | 292.35 | 302.70 | 309.74 |
| PTC | 20.96 | 20.00 | 20.48 | 21.18 | 21.66 | 22.36 |
| SNGP | 28.94 | 27.64 | 28.29 | 28.65 | 29.30 | 29.66 |
| SPL | 18.92 | 17.51 | 18.22 | 19.30 | 20.01 | 21.09 |
| UBL | 55.09 | 48.86 | 51.97 | 54.24 | 57.35 | 59.62 |

| | Last Day's | | | Moving Averages | | |
|--------|------------|---------|---------|-----------------|---------|---------|
| | OPEN | HIGH | LOW | SMA 10 | SMA 20 | SMA 40 |
| KSE100 | 8996.19 | 9153.53 | 8996.19 | 8904.12 | 8535.64 | 8169.52 |
| AHL | 66.76 | 68.99 | 66.90 | 67.38 | 73.95 | 78.36 |
| AHSL | 37.33 | 39.10 | 37.61 | 36.68 | 34.05 | 31.94 |
| AICL | 103.48 | 105.50 | 103.10 | 102.95 | 100.15 | 101.02 |
| ANL | 27.26 | 27.90 | 27.05 | 27.18 | 26.69 | 26.42 |
| ATRL | 154.74 | 159.00 | 153.81 | 150.48 | 148.79 | 150.34 |
| BAFL | 12.54 | 12.96 | 12.54 | 12.50 | 11.94 | 11.63 |
| BIPL | 6.08 | 6.27 | 5.95 | 6.08 | 6.21 | 6.40 |
| BOP | 13.31 | 13.67 | 13.10 | 12.21 | 11.18 | 10.86 |
| BOSI | 7.49 | 7.78 | 7.50 | 7.48 | 7.44 | 7.48 |
| DGKC | 33.90 | 35.50 | 34.01 | 33.97 | 34.44 | 36.04 |
| ENGRO | 153.71 | 157.70 | 154.13 | 152.35 | 144.86 | 141.45 |
| HBL | 121.96 | 123.50 | 116.10 | 119.77 | 115.06 | 107.90 |
| ICI | 169.10 | 170.50 | 163.00 | 167.48 | 154.97 | 150.15 |
| JOVC | 13.18 | 13.65 | 12.95 | 13.07 | 12.88 | 13.32 |
| JSCL | 28.97 | 28.99 | 28.01 | 26.83 | 25.72 | 25.43 |
| LUCK | 74.08 | 77.49 | 74.31 | 72.84 | 72.95 | 72.92 |
| MCB | 205.71 | 210.30 | 206.00 | 208.98 | 194.45 | 181.25 |
| MLCF | 4.90 | 5.00 | 4.85 | 4.88 | 4.86 | 5.23 |
| NBP | 77.64 | 79.95 | 77.98 | 75.99 | 70.78 | 69.65 |
| NETSOL | 24.86 | 25.49 | 24.31 | 24.28 | 23.47 | 24.55 |
| NML | 55.60 | 58.38 | 56.00 | 49.74 | 47.09 | 44.30 |
| OGDC | 109.53 | 114.40 | 110.10 | 111.03 | 103.73 | 96.44 |
| POL | 210.47 | 216.90 | 209.01 | 202.65 | 192.66 | 180.46 |
| PPL | 226.15 | 229.40 | 226.00 | 217.88 | 208.11 | 199.12 |
| PSO | 291.04 | 298.00 | 291.00 | 288.40 | 280.27 | 261.81 |
| PTC | 21.12 | 21.75 | 20.80 | 21.16 | 20.63 | 18.98 |
| SNGP | 28.38 | 29.01 | 28.29 | 28.31 | 28.38 | 29.00 |
| SPL | 19.03 | 19.30 | 18.75 | 19.01 | 18.95 | 19.14 |
| UBL | 54.96 | 56.50 | 54.51 | 53.49 | 49.17 | 46.34 |

This report is prepared for an information purpose only. The material used in this report has been taken from sources those are considered reliable but we do not guarantee that it is accurate and complete. S.N.M Securities (Pvt.) Limited and its employees bear no liability for any direct or indirect consequential loss arising from use of this report. This report or any part of it may not be reproduced or republished without prior permission.