

## Views & News

### \$1 billion pledges: Japan says use our taxpayers' money transparently

After the United States, Japan also pressed Pakistani government to ensure transparent and effective utilisation of its \$1 billion assistance pledged during the Tokyo conference in April 2008. The emphasis was made at a meeting of visiting Foreign Minister of Japan Katsuya Okada with his Pakistani counterpart Makhdoom Shah Mehmood Qureshi here on Monday.

### Provinces express inability to procure paddy

The provincial governments have expressed inability to procure paddy, citing financial constraints and lack of administrative capacity and storage infrastructure, sources told *Business Recorder*. This shocking revelation came at the Economic Co-ordination Committee (ECC) of the Cabinet meeting on October 6, 2009, which was presided over by Minister for Privatisation and Petroleum Naveed Qamar.

### Minister sees sugar industry doom if mills fail to pay dues

Federal Minister for Food and Agriculture on Monday observed that if the sugar millers failed in timely payment of the dues to farmers there is a strong possibility that they will shift to other cash crops such as wheat and rice, which will eliminate the sugar industry in next five years, forcing the country to solely depend on imports for local consumption.

### NFC meeting: Tarin terms GST on services provinces' right

The federal government has agreed in principle to Sindh's suggestion under which the revenue generated through General Sales Tax (GST) would go to the province here on Monday during the first session of National Finance Commission (NFC) meeting. Technical Member from Sindh on NFC renowned economist Qaiser Bangali told reporters after the meeting that former Attorney General Makhdoom Ali Khan interpreted the provisions in the Constitution supporting Sindh's stance on GST.

### Terrorists wanted to take senior officers hostage: ISPR

The main target of terrorists was to take the senior military leaders hostage to get their detained accomplices released, said Major General Athar Abbas, Director General Inter-Services Public Relations (ISPR), here on Monday. "They sent their demands for the release of all their accomplices after making people hostage at GHQ," Abbas said while briefing the media about the details of the operation against terrorists after they attacked the GHQ at 11.30 am on Saturday.

### Six soldiers among 41 killed in Shangla suicide blast

A suicide bomber flung himself at a military convoy passing through a busy market in Alpuri town in Shangla on Monday, killing 41 people in the latest in a wave of deadly strikes, the military said. The bomber targeted a paramilitary convoy as it passed through a security checkpoint in a bazaar in Alpuri town in Shangla, a district neighbouring Swat valley and the target of a recent anti-Taliban military offensive.

### Nawaz to be consulted on US aid bill: Prime Minister

The Prime Minister, Syed Yousuf Raza Gilani, has said that on his return he will take all the stakeholders into confidence on the controversial Kerry-Lugar bill passed by the US Congress recently. Talking to the media aboard the aircraft on his way to Beijing to attend a meeting of the Shanghai Co-operation Organisation, he said that hopefully, Nawaz Sharif would also return to the country by that time and he too would be consulted.

### Pakistan and US need to work together: Zardari

President Zardari on Monday stated that there is concern being expressed in certain quarters about some of the provisions of the Kerry-Lugar Bill and that the US and Pakistan need to work together to remove these concerns. He made these comments during a call on the President by US Senator Daniel Inouye, Chief of the US Senate Appropriation Committee here.

\* Please see disclaimer note on page 2 and 3 of this newsletter.

## Research Department

Muhammad Atif Nazir  
Equity Research Analyst  
0300 8020406 muhamad@accamail.com

Karachi Office  
Room No. 504, 5th Floor, Business & Finance Centre I I Chundrigar Road  
Tel 021 2467201-19 Fax 021 2467200

Lahore Office  
203-B, 2nd Floor, City Tower, Gulberg II  
Tel 042 5770451-9 Fax 042 5770460

## Statistical Data

### Equities

	KSE 100	Turnover (mn)
12.10.09	9,642	156.717
09.10.09	9,769	239.669
<b>Change</b>	(127)	(82.952)

### Board Meetings

Date	Time	Company
14.10.09	12:00	Otsuka Pakistan
14.10.09	4:00	Al-Ghazi Tractors
15.10.09	11:30	KSB Pumps
15.10.09	11:30	Rafhan Maize Products
15.10.09	3:00	Shell Pakistan
19.10.09	10:00	National Refinery
20.10.09	2:00	Pakistan Tobacco
21.10.09	10:00	Fauji Fertilizer Bin Qasim
21.10.09	11:00	Bata Pakistan
22.10.09	2:30	Unilever Pakistan Foods
24.10.09	3:00	Packages Ltd.
24.10.09	9:30	Unilever Pakistan Foods

### IPO's

Prospectus Published	Date of Opening & Closing	Company
-	-	-
-	-	-

### GDR

12.10.09	OGDC (1GDR =10 shares)	\$14.00
12.10.09	UBL (1GDR=4 shares)	\$1.90 -0.10 -5.00%
12.10.09	MCB (1GDR=2 shares)	\$3.00

### Commodities

	Price	Change
Oil (USD/bbl)	73.27	1.50
Gold (USD/oz)	1057.50	8.90

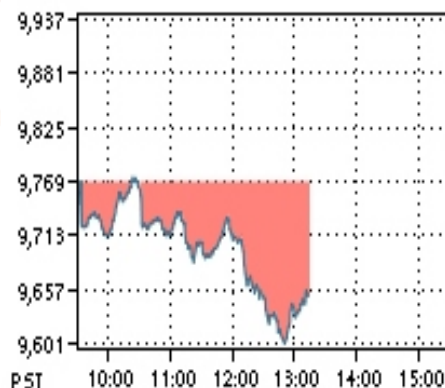
### SCRA

	Balance (US\$mn)	Net Flow (US\$mn)
07.10.09	250.15	0.21

### CFS MKII

	Total Value (Prsmn)	Average Rate (%)
15.06.09	68.48	50.00
12.06.09	68.50	50.00

## KSE 100 Index





### Senate calls to develop consensus on controversial clauses

The upper house of the parliament Monday demanded of the government to develop consensus on the controversial clauses of the Kerry-Lugar bill and proposed an all parties round-table conference for this purpose. On second day of the debate on the US aid bill, leader of opposition in Senate Wasim Sajjad alleged that the US has included the anti-Pakistan controversial clauses in the bill after backdoor diplomacy, taking into confidence some Pakistan officials in US.

### National Assembly condemns attack on GHQ

The National Assembly on Monday strongly condemned the terrorist attack on GHQ and unanimously passed a resolution saying that the nation is fully united against all threats to the security, integrity and sovereignty of Pakistan. The motion was moved by Leader of Opposition in National Assembly and Minister for Parliamentary Affairs Dr Zaheeruddin Babar Awan in the House.

### Hezbollah official among dead in Lebanon blast

A Hezbollah official and his son were killed in a munitions explosion in their home in southern Lebanon on Monday, security sources said. Three other people were killed in the blast in Tayr Fils village on the southern bank of the Litani river, just inside UN peacekeepers' area of operations.

### THE RUPEE: parity stays put

Steady trend was seen on the interbank market on Monday as the rupee retained its weekend levels versus dollar for buying and selling at 83.25 and 83.30, they said. In the first Asian trade dollar edged broadly higher, extending a short-covering bounce against yen as investors trimmed dollar-selling positions on caution that US interest rates could move up earlier than expected.

### CPI inflation surges by 10.66 percent in September

The CPI inflation surged by 10.66 percent in September, 2009 over the same period of last year, according to the data on monthly inflation released by Federal Bureau of Statistics (FBS) on Monday. The official figures released by the FBS showed that Sensitive Price Indicator (SPI) and Wholesale Price Index (WPI) inflation witnessed an increase 9.29 and 0.49 percent respectively in September, 2009 over the same period of last year.

### FBR's drive to register guesthouses, marriage halls and hotels

The Federal Board of Revenue (FBR) has launched a drive to register hundreds of potential guesthouses, marriage halls, caterers and hotels/restaurants in all major cities of the country with sales tax department. In this connection, the FBR has issued instructions to all collectors of Large Taxpayer Units (LTUs) and Regional Tax Offices (RTOs) here on Monday.

### Islamic banking: Pakistan likely to issue licences to Gulf banks

Pakistan is likely to issue a new Islamic banking license for Gulf banks next year, a senior banking executive said on Monday. "New licenses will be issued. There is a strong possibility that an Islamic banking license for the Gulf will be issued next year," said Pervez Said, a former director of Islamic banking at the State Bank of Pakistan who is going to be the chief executive officer of Dawood Islamic Bank next month.

### TCP clarification

Apropos a news item regarding an Auditor General of Pakistan report about TCP, carried by *Business Recorder* on October 8, the Trading Corporation of Pakistan (TCP) has clarified that the news item is not based on full facts. The facts of the case are as under:

Announcements					
Company	EPS (Rs)	Dividend/ Bonus/ Right	Spot From	Book Closure	
				From	To
First UDL Modarba	1.41	10% (F)(D)	-	27/10/09	03/11/09
Gulistan Textile Mills Limited	0.09	10% (B)	-	29/10/09	31/10/09
Nishat (Chunian)	1.19	15% (F)(D)	-	30/10/09	05/11/09
Paramount Spinning Mills	1.57	10% (B)	-	29/10/09	31/10/09
Gulshan Spinning Mills	0.26	10% (B)	-	23/10/09	29/10/09
Gulistan Spinning Mills	1.00	10% (B)	-	28/10/09	31/10/09
Leiner Pak Gelatine Limited	2.85	12% (F)(D)	-	24/10/09	31/10/09
Pak Elektron Limited	2.17	10% (B)	-	31/10/09	06/11/09
Habib-ADM Sugar Mills Ltd.	3.53	40% (F)(D)	-	21/10/09	30/10/09
Hafiz Textile Mills Limited	5.44	7.5% (I)(D)	-	21/10/09	28/10/09
Sunrays Textile Mills Limited	7.60	10% (F)(D)	-	22/10/09	28/10/09
Indus Dyeing Mfg. Co. Limited	10.58	15% (F)(D)	-	22/10/09	28/10/09
Ados Pakistan Limited	7.87	20% (F)(D)	-	23/10/09	31/10/09
Sitara Energy Limited	4.24	20% (F)(D)	-	21/10/09	31/10/09
Transmission Engineering Co.	0.69	2% (F)(D)	-	20/10/09	27/10/09
Masood Textile Mills	15.06	15% (F)(D)	-	28/10/09	05/11/09
Punjab Oil Mills Limited	15.55	15% (F)(D) 25% (B)	-	25/10/09	31/10/09
Pakistan Engineering Co.	23.54	20% (F)(D)	-	24/10/09	01/11/09
Good Luck Industries Ltd.	7.91	20% (F)(D)	-	16/10/09	23/10/09
Murree Brewery Company Ltd.	16.45	50% (F)(D)	-	23/10/09	30/10/09

Top Symbols						
SYMBOL	OPEN RATE	HIGH RATE	LOW RATE	CURRENT RATE	CHANGE	VOLUME
<b>TOP SYMBOLS BY VOLUME</b>						
Jah.Sidd. Co.	38.35	39.45	37.45	39.1	0.75	28,878,350
Arif Habib Sec.	43.68	45.86	43.26	45.86	2.18	15,833,235
Bank Al-Falah	14.4	14.45	13.9	13.98	-0.42	8,246,801
Nishat Mills Limited	62.39	62.2	59.4	60.54	-1.85	7,971,835
P.T.C.L.A	20.36	20.56	20	20.11	-0.25	4,946,375
<b>TOP SYMBOLS BY PRICE INCREASE</b>						
Siemens Pak Engg.	1356.25	1400	1399.5	1399.96	43.71	39
Wyeth Pak Ltd.	1321	1350	1310	1350	29.00	51
UniLever Pak.XD	2211.1	2270	2221.01	2226	14.90	5
Hinopak Motor Ltd.	260.79	273.82	272	273.82	13.03	2,939
Nishat Tractors SPOT	451.84	474	442.05	462.81	10.97	48,781
<b>TOP SYMBOLS BY PRICE DECREASE</b>						
Nestle Pakistan	1251	1300	1200	1200	-51.00	376
Bata (Pak) Ltd.	920	875	874	875	-45.00	3
Attock Petroleum	381.18	393	362.13	362.38	-18.80	1,325,356
Mari Gas Co.Ltd.	328.77	325	312.34	312.34	-16.43	346,405
MCB Bank Limited	234.66	236.25	224.01	225.45	-9.21	1,948,242

This report is prepared for an information purpose only. The material used in this report has been taken from sources those are considered reliable but we do not guarantee that it is accurate and complete. S.N.M Securities (Pvt.) Limited and its employees bear no liability for any direct or indirect consequential loss arising from use of this report. This report or any part of it may not be reproduced or republished without prior permission.



Daily Supports/Resistances						
	Close	S2	S1	Pivot	R1	R2
KSE100	9642.56	9487.79	9565.18	9675.73	9753.12	9863.67
AHL	80.31	78.05	79.18	80.63	81.76	83.21
AHSL	45.86	42.39	44.13	44.99	46.73	47.59
AICL	116.80	114.34	115.57	117.23	118.46	120.12
ANL	26.99	25.87	26.43	27.06	27.62	28.25
ATRL	138.32	135.67	137.00	139.12	140.45	142.57
BAFL	13.98	13.56	13.77	14.11	14.32	14.66
BIPL	6.42	6.29	6.35	6.42	6.48	6.55
BOP	14.84	14.35	14.59	15.00	15.24	15.65
BOSI	7.39	7.22	7.31	7.43	7.52	7.64
DGKC	34.81	34.28	34.55	35.01	35.28	35.74
ENGRO	174.46	169.62	172.04	174.17	176.59	178.72
HBL	134.43	129.48	131.95	135.73	138.20	141.98
ICI	176.01	170.70	173.35	177.67	180.32	184.64
JOVC	14.24	13.99	14.11	14.31	14.43	14.63
JSCL	39.10	36.67	37.88	38.67	39.88	40.67
LUCK	83.06	79.55	81.31	83.75	85.51	87.95
MCB	225.45	216.33	220.89	228.57	233.13	240.81
MLCF	4.66	4.57	4.61	4.70	4.74	4.83
NBP	85.64	83.75	84.69	86.15	87.09	88.55
NETSOL	26.20	25.45	25.83	26.36	26.74	27.27
NML	60.54	57.91	59.23	60.71	62.03	63.51
OGDC	109.81	108.04	108.93	109.88	110.77	111.72
POL	215.03	212.24	213.64	215.44	216.84	218.64
PPL	190.26	186.89	188.58	190.78	192.47	194.67
PSO	334.81	321.94	328.37	334.44	340.87	346.94
PTC	20.11	19.66	19.89	20.22	20.45	20.78
SNGP	29.19	28.14	28.67	29.47	30.00	30.80
SPL	18.83	18.49	18.66	18.95	19.12	19.41
UBL	64.59	62.54	63.57	64.53	65.56	66.52

Weekly Supports/Resistances						
	Weekend's Close	S2	S1	Pivot	R1	R2
KSE100	9768.63	9253.90	9511.27	9723.79	9981.16	10193.68
AHL	80.46	69.55	75.01	79.20	84.66	88.85
AHSL	43.68	40.57	42.12	43.26	44.81	45.95
AICL	117.66	108.90	113.28	118.39	122.77	127.88
ANL	26.59	25.13	25.86	27.23	27.96	29.33
ATRL	138.97	132.12	135.55	141.71	145.14	151.30
BAFL	14.40	11.60	13.00	13.85	15.25	16.10
BIPL	6.51	5.64	6.08	6.63	7.07	7.62
BOP	15.14	13.97	14.55	15.10	15.68	16.23
BOSI	7.46	7.22	7.34	7.52	7.64	7.82
DGKC	35.32	32.50	33.91	35.62	37.03	38.74
ENGRO	173.04	161.31	167.18	176.46	182.33	191.61
HBL	138.26	117.60	127.93	134.34	144.67	151.08
ICI	181.14	159.71	170.43	185.71	196.43	211.71
JOVC	14.48	13.54	14.01	14.73	15.20	15.92
JSCL	38.35	34.27	36.31	39.16	41.20	44.05
LUCK	85.16	69.93	77.55	82.97	90.59	96.01
MCB	234.66	206.85	220.76	230.60	244.51	254.35
MLCF	4.71	4.50	4.61	4.80	4.91	5.10
NBP	87.63	81.28	84.46	87.17	90.35	93.06
NETSOL	25.79	21.13	23.46	25.23	27.56	29.33
NML	62.39	57.70	60.05	64.39	66.74	71.08
OGDC	110.63	102.90	106.77	110.69	114.56	118.48
POL	216.47	210.42	213.45	218.42	221.45	226.42
PPL	192.69	186.16	189.43	192.96	196.23	199.76
PSO	330.34	311.11	320.73	331.11	340.73	351.11
PTC	20.36	18.65	19.51	20.96	21.82	23.27
SNGP	29.90	25.59	27.74	29.67	31.82	33.75
SPL	18.90	17.33	18.11	19.59	20.37	21.85
UBL	64.93	57.31	61.12	63.81	67.62	70.31

	Last Day's			Moving Averages		
	OPEN	HIGH	LOW	SMA 10	SMA 20	SMA 40
KSE100	9768.63	9786.29	9598.35	9570.11	9422.84	8929.61
AHL	80.46	82.08	79.50	77.33	72.89	74.13
AHSL	43.68	45.86	43.26	43.15	41.34	37.45
AICL	117.66	118.89	116.00	115.48	112.34	106.13
ANL	26.59	27.69	26.50	27.43	28.22	27.43
ATRL	138.97	141.25	137.80	147.94	152.41	150.53
BAFL	14.40	14.45	13.90	13.27	13.09	12.44
BIPL	6.51	6.48	6.35	6.39	6.24	6.23
BOP	15.14	15.40	14.75	15.04	14.77	12.82
BOSI	7.46	7.56	7.35	7.56	7.64	7.53
DGKC	35.32	35.48	34.75	35.04	35.06	34.93
ENGRO	173.04	176.30	171.75	178.87	172.18	157.72
HBL	138.26	139.50	133.25	128.74	125.78	119.75
ICI	181.14	181.98	175.01	186.10	176.04	164.16
JOVC	14.48	14.50	14.18	14.87	14.18	13.53
JSCL	38.35	39.45	37.45	39.01	34.59	29.99
LUCK	85.16	86.20	82.00	79.70	77.25	75.02
MCB	234.66	236.25	224.01	225.21	221.38	206.40
MLCF	4.71	4.78	4.65	4.76	4.84	4.86
NBP	87.63	87.60	85.20	85.15	82.90	76.28
NETSOL	25.79	26.90	25.99	24.46	24.47	23.89
NML	62.39	62.20	59.40	65.26	65.40	55.61
OGDC	110.63	110.84	109.00	109.42	111.12	106.57
POL	216.47	217.25	214.05	215.39	214.43	201.87
PPL	192.69	192.99	189.10	191.34	203.80	204.33
PSO	330.34	340.50	328.00	326.35	317.33	296.89
PTC	20.36	20.56	20.00	20.83	20.99	20.64
SNGP	29.90	30.28	28.95	28.67	29.39	28.89
SPL	18.90	19.24	18.78	19.79	19.54	19.25
UBL	64.93	65.50	63.51	61.56	58.71	53.39

This report is prepared for an information purpose only. The material used in this report has been taken from sources those are considered reliable but we do not guarantee that it is accurate and complete. S.N.M Securities (Pvt.) Limited and its employees bear no liability for any direct or indirect consequential loss arising from use of this report. This report or any part of it may not be reproduced or republished without prior permission.